



Model Shipwrights of Western New York

Meeting Log

MARCH 23, 2023

TOPICS

Old/New Business Brief

Call for future topics

It was stated that we will have a complimentary presentation at the April meeting on rigging presented by Bob Filipowski of the Midwest Model Shipwrights. Bob is an accomplished modeler and has graciously offered to provide his work on the rigging of a particular model.

At this point May, September, October and November remain open. I acknowledge there are some folk waiting in the wings for upcoming months so I am optimistic we will have feature topics or possibly two short topics as we did in March. Please consider contributing to our agendas. It is so important to our continued enrichment programs.

.

New Member i\Induction

Melissa was “inducted” into our group as a member last evening. I speak for the entire group when I extend a warm welcome!

Paper Modeling Part 1

Part 1 of this coverage was hosted by Ian McLaughlin, Christopher Cooke, Paul Fontenoy and one other member of The Society of Model Shipwrights (of England). They will produce an edited video and host it on their site via You Tube soon. This session covered tools, glue, colorants, basic folding, kit sources and references. Some construction principles were also discussed. One needs few tools, basic instruction and some tips on assembly to get started. The scales of 1:96 and 1:72 were mentioned and may be a norm. Laser cutting seems to have taken a solid footing in the production of the build booklets.

In a word the results of their works were quite impressive! Part 2 will be held in April and well worth the investment of your time.

Put This on your Bucket List

The New Jersey Model Society attended a special showing of Miniature world in NYC recently . It comes highly recommended as it is a giant display in miniature of points of interest all around the world. It will open to the public soon. Here is a brief on location and content:

Tomorrow, Saturday, March 11, 2023 at 10 AM, we will be meeting at Miniature World Staten Island for an exclusive behind the scenes walk through this fantastic model of the world. Members are invited along with friends and family. Here are the details:

Our members to go to the Empire Outlet Mall, at 55 Richmond Terrace, Staten Island, NY 10301. There is parking in a garage at the bottom of the mall. Take the elevator to the 3rd floor. From there they are to meet at Room #336 at 10:00 am. The room looks like a store front. Mason Loggie will be there to meet you. His cell phone (347) 628-6017.

Under separate cover I will send the Broad Axe to the group with many photos of the outing to give you an idea of the complexity and enormity of the exhibit.

Planking Revisited

Part 1B was presented of the Planking Tutorial in this meeting. It encompassed some updates on references and finished the elements of milling and bending prior to getting into the planking fundamentals using the planking graph found on Model Ship World. This simple graphic tool obviates the need of proportional dividers in setting up hull demarcations for planking but possibly more importantly has attributes that make planking much easier.

Part 1B was covered in some detail with elements that tried to capture two cases meant to be inclusive of kits in which the planking materials are often decided for the builder as well as the scratch or kit basher who may wish more flexibility in their material sizes and build authenticity.

Let me suggest that most of what was offered applies to either case. However, upon reflection I may have gone too far with this notion of trying to cover all conditions. It may have been more beneficial to explain the use of the planking graph in

terms of the general case and cite how one might apply it to the more obvious challenges that may be encountered.

In addition, I realized afterwards I had short changed everyone as I did not adequately cover the transfer of planking graph data to the actual plank along with the very import element of lining off the hull into bands.

To that end I am going to rework the slides and release them in the near future along with the segment by Bob Filipowski on fitting drop planks and stealers (steelers).

Building the USS Essex 1799



Gerry M has completed the build of the USS Essex of 1799. The kit is a Model Shipways rendition in 5/32" or 1:76.8 scale. He related that he had two reference booklets to support his build. One from the original designer, Sam Cassano and the latter one rewritten by Robert Crane.

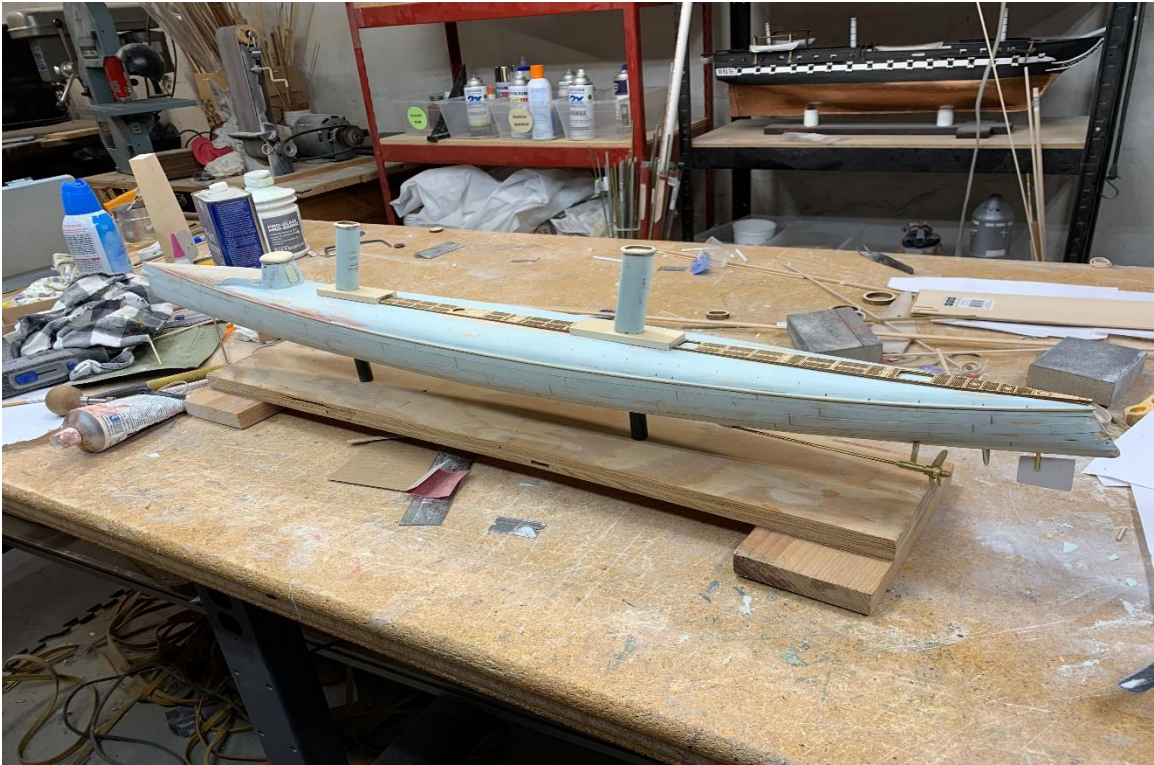
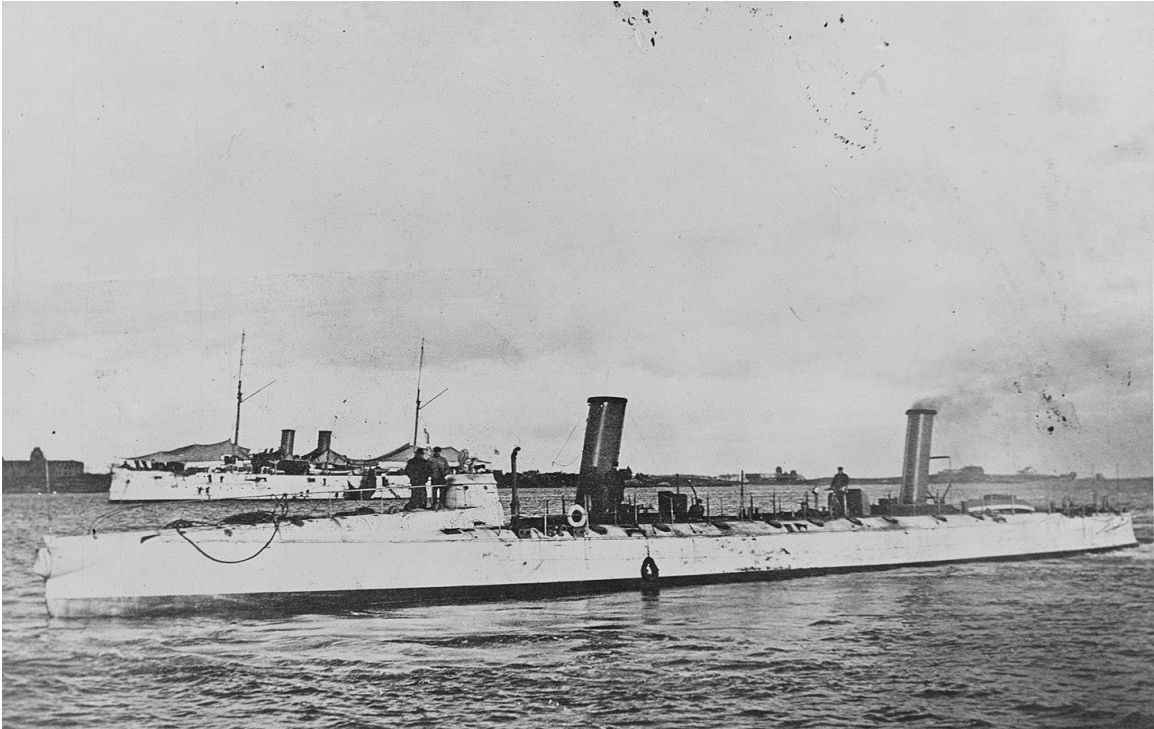
Gerry has produced a fine model as one can see in the photos supplied. Besides his impressive execution of the basic hull and deck structure his detailing of the appointments is quite well done. He tells us he plated the hull with copper banding with an adhesive back. He further related that over 500 individual plates were fashioned and individually treated with a pounce wheel to simulate rivets! The end result was quite neat and clean. Would you agree?

He related that a number of the kit supplied cast appointments did not match up to his standards hence he replaced them. On another note his finish on the unplated hull was quite convincing depicting a vessel that had been at sea and showing the signs of exposure. He stated that he used Golden Oak stain applied sparingly to the unpainted hull area to produce the result he was looking for. A similar type stain product was used on the decking to achieve the similar effect.

Well done Gerry!



Building The USS Ericsson of 1890



Bill E never fails to capture the group's attention with his scratch built military models. The USS Ericsson was no exception. In a prepared presentation Bill took us through a brief history of this vessel type, its uncharacteristic hull shape, its rather strange torpedo launching style and propulsion system. The latter he explained as a quadruple expansion steam propulsion system driving offset stern props. He explained the mechanism workings via a cross section photo of a triple expansion system.

Bill explained the construction of the model. He designed the model using archival drawings on Corel Draw and then had parts laser cut at Don Onley's shop. Bill uses yard stick material from what seems an inexhaustible supply of brand new ones to construct the strong back and planking. The strong back supports his numerous bulkheads. These he separate with stacked spacers riding the strong back. The entire assembly produces a very sturdy skeletal structure.

He also showed us some of the top sides laser cut grating, forward tower and stacks he has fashioned at this stage.



Hard to see here but he is using his usual application of two part fairing compound to simulate hull side plating.



Models on Deck

Bob D. continues his work on the Navy frigate Confederacy. Each time we witness it and see his progress we are treated to some fine work. This as you may know is a Model Shipways kit in 1:64 scale. It is highly detailed and requires very careful execution to deliver a fine rendition. Bob is definitely up to the task.





Just an example of Bob's fine work in the stern area always a make or break segment.